

OMEGA READINGS MUST BE CORRECTED BEFORE BEING PLOTTED ON THIS CHART
USE DIMANTO PULS 234 (111-1) C.I. A.C.D. F AND G
OMEGA PAIRS ON THIS CHART:
DF CF AC AF DG
STATIONS: (A-Norway) (C-Hawaii) (D-N. Dakota) (F-Argentina) (G-Australia)
FREQUENCY: 10.2 MHz

MERCATOR PROJECTION
WORLD GEODETIC SYSTEM (WGS)
SCALE 1:300,000 AT LAT. 11°20'30"
For Symbols and Abbreviations, see Chart No. 1

OMEGA

SOUTH AMERICA

VENEZUELA — NETHERLANDS ANTILLES

PUNTA SAN JUAN TO CABO CODERA

INCLUDING OFFSHORE ISLANDS

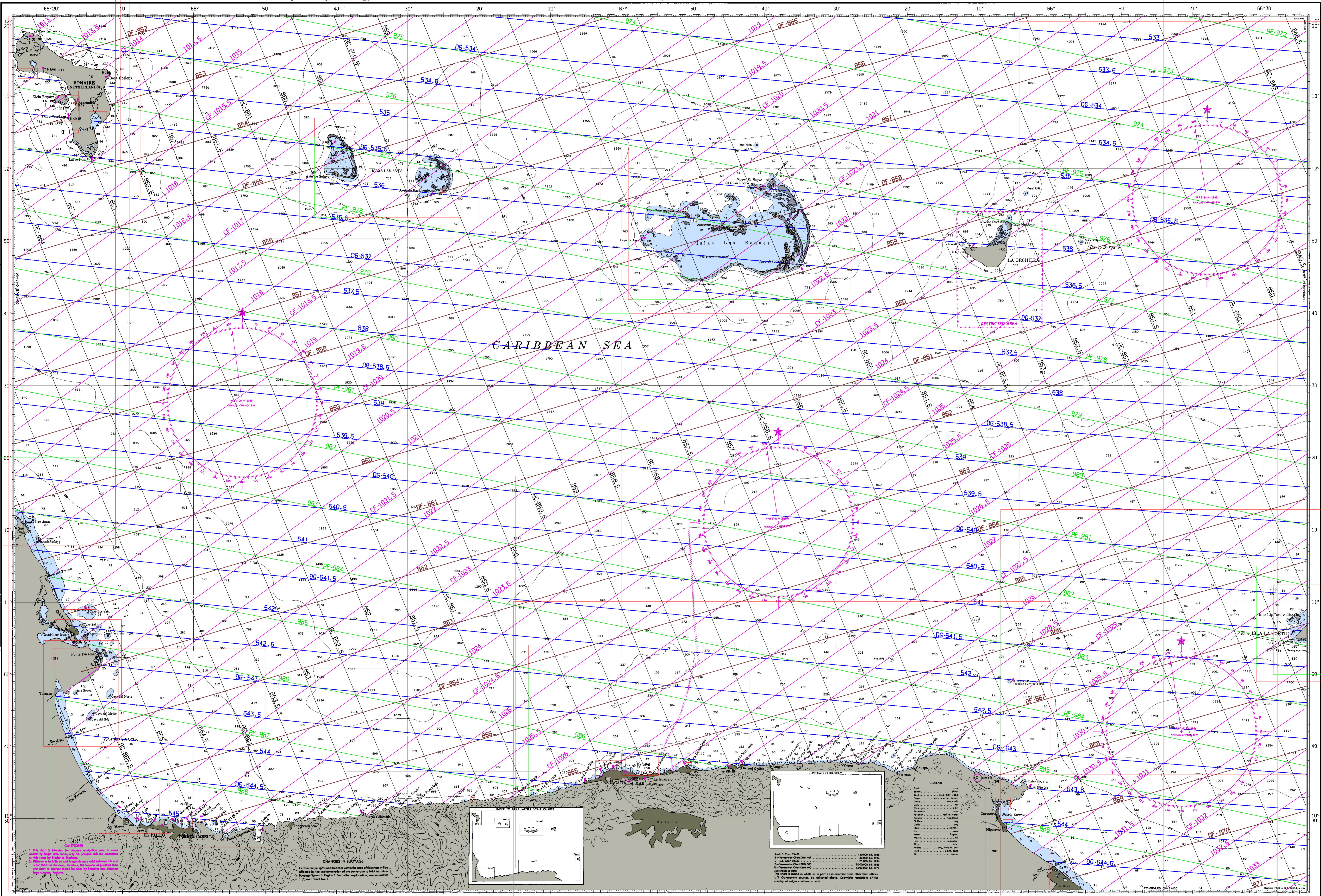
From Venezuelan and U.S. charts to 1986
1:24, Aug. 1982

SOUNDINGS IN METERS
(Under 20 in meters and decimeters)
reduced to the approximate level of Mean Low Water Springs
HEIGHTS IN METERS ABOVE MEAN SEA LEVEL
Contour interval 400 meters

SOUNDINGS IN METERS

24450

24450



24450

24450

SOUNDINGS IN METERS

WARNING

Punta San Juan to Cabo Codera including Offshore Islands

Users should refer correction, addition, and omissions for reporting this product to the DIRECTOR, BUREAU OF MARINE AGENCY, ATTN: 98, 803 LEE HIGHWAY, FARMAX, VA 22021-2107.

24450
24450



24450

Prepared and published by the
DEFENSE MAPPING AGENCY HYDROGRAPHIC SURVEILLANCE CENTER
Washington, D.C. 20315-0002

Chart No.	Scale	Year
1:100,000	1:100,000	1986
1:200,000	1:200,000	1986
1:300,000	1:300,000	1986
1:400,000	1:400,000	1986
1:500,000	1:500,000	1978

This chart is based in whole or in part on information from other than the official U.S. Government surveys, as indicated above. Copyright restrictions of the country of origin continue to exist.